

NOTES:

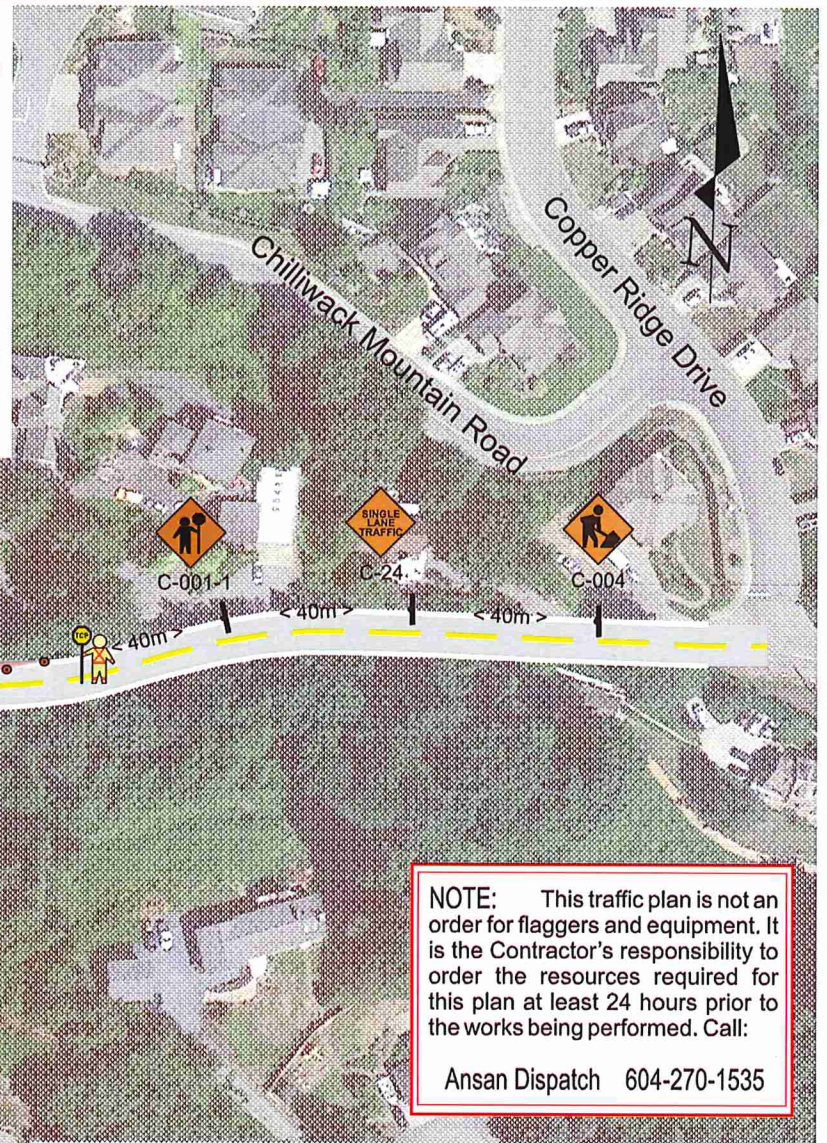
1. TerraCana Foundation Services Ltd. will be installing services along the North edge of Old Orchard Road and require the closure of a 20 meter section of the Westbound lane at the boundary between 43680 and 43730 Old Orchard Road.

Traffic will be conducted in Single Lane Alternating (SLAT) fashion past the works.

2. Bus Stops and pedestrians are not affected. Traffic speed in the area is 50 km/hr.

3. Two TCP's and one Lane Closure Vehicle with flashing arrow board will be required and deployed as shown.


4. Sign location and spacing will be in conformity with the requirements of the City and the Manual for Work on Roadways (2015 Interim) as published by the MoTI. Changes to layout of signage may be made by the TCP in charge to accommodate traffic and local conditions on site at the time.




NOTE: This traffic plan is not an order for flaggers and equipment. It is the Contractor's responsibility to order the resources required for this plan at least 24 hours prior to the works being performed. Call:
Ansan Dispatch 604-270-1535

This Traffic Management Plan is an adaptation of Figure 7.8 of the Traffic Control Manual (2015 Interim)

LEGEND

-  TRAFFIC CONTROL PERSON
-  TRAFFIC CONE TYPE 'D'
-  LANE CLOSURE TRUCK
-  UTILITY POLE / MANHOLE
-  TRAFFIC SIGN LOCATION
-  TRUCK MOUNTED FAB

This Traffic Plan has been prepared by Ansan Industries Ltd. (Ansan) based, in part, on information provided by third parties. Every effort has been made to ensure that the plan conforms to the requirements of the Motor Vehicle Act [RSBC 1966] Chapter 318 and Regulations and to the BC Traffic Control Manual. Ansan assumes no responsibility for the uses to which this plan is put by third parties not directly under the supervision of Ansan or its agents.

	Ansan Industries Ltd. 2600 Viking Way, Richmond, British Columbia V6V 1N2
No: 18-2414	Customer: TerraCana Foundation Solutions Inc.
Date: 29 May 2018	Contact: Rick Bongers Tel: 604-314-9600
Title: Infrastructure Installations 43730 and 43680 Old Orchard Road Chilliwack, British Columbia	
Traffic Tech: Flynn Marr	Dwg By: R. Flynn Marr B.Sc.(Eng)
File: Plan 18-2414 - TerraCana	